



Development of National Standards for the prevention and control of healthcare-associated infections in primary and community health and social care services (outside of the hospital setting)

HPSC Safe patient care course 5th Sep

Dr Fiona McKenna
Standards Development Clinical Lead, HIQA


Safer Better Care



Overview

- HIQA's Standards Development function
- National Standards for the prevention and control of healthcare-associated infections
- Infection prevention and control challenges in the community
- Lessons learnt from the acute sector
- Standards development process
- Standards development framework
- Next steps

Safer Better Care



Overview of HIQA

Established in May 2007 under the Health Act 2007

- Functions
 - Setting Standards
 - Monitoring quality and safety in healthcare
 - Registering and inspecting social services
 - Health Information
 - Health Technology Assessment
- Standards developed under sections 8(1)(b) (i) and (ii) of the Health Act 2007

Safer Better Care

HIQA's Standards Development Function

Purpose of National Standards:

- A key driver in quality and safety
- Act as an impetus to recognise good practice and address poor performance
- However, standards and regulations do not in and of themselves provide high quality care.

Safer Better Care

National Standards for Health and Social Care

Safer Better Care

National Standards for the prevention and control of healthcare-associated infections

Safer Better Care

Standards for primary and community health and social care services(outside of the hospital setting) will:

- place an emphasis on infection prevention and control in the sector
- be specific to the needs of the sector
- incorporate findings from HALT study 2016
- align with HSE healthcare system-wide response to current infection prevention and control risks
- allow coordination of an Advisory group representative of primary and community care

Health Information and Quality Authority
An tArdán Lim Nuairéil
agat Calaisín Síne

Safer Better Care

Infection prevention and control challenges in the community

- increasingly susceptible population, complexity of treatments, earlier hospital discharges
- high HCAI prevalence in LTCF
- high anti-microbial use in community
- emerging trend of antimicrobial resistance
- lack of standardised infection prevention and control practices

Health Information and Quality Authority
An tArdán Lim Nuairéil
agat Calaisín Síne

Safer Better Care

Lessons from inspections in acute hospitals

Health Information and Quality Authority
An tArdán Lim Nuairéil
agat Calaisín Síne

Overview of HIGA unannounced infection prevention and control inspections 2015

30 unannounced inspections
7 re-inspections within 6 weeks
20% of hospitals required re-inspection in 2015 vs 14% in 2014

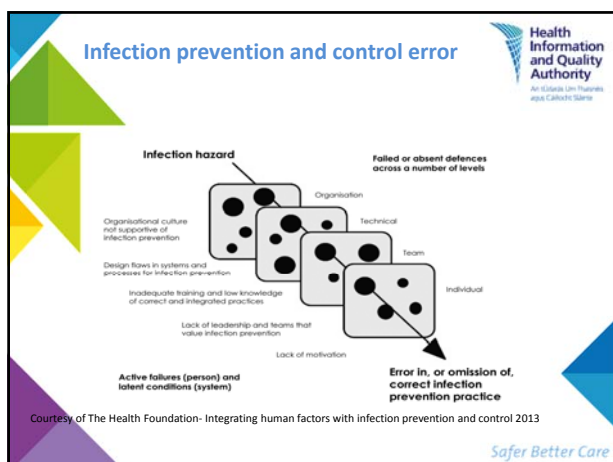
Environment and facilities management
new identified in:
Cleanliness 26 hospitals
Infrastructure 19 hospitals
Maintenance 11 hospitals

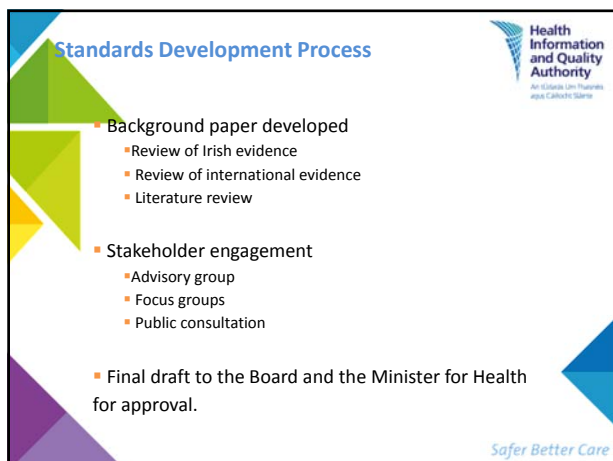
Preventing invasive device related infections
Core bundles
A total bundle is a collection of safe practices which when used consistently have been shown to reduce infection
Actions required
Core bundles need to be implemented across all hospitals
Scope for improved audit and device related infection surveillance, with better feedback to staff

Safe injection practices
98% of hospitals used to improve in:
Preparation Storage Labelling of intravenous medicines in the clinical area
Hand hygiene performance and awareness is improving in hospitals

Good environmental hygiene
Effective implementation of core bundles
Safe use of medicines
Good hand hygiene
A safer environment for patients

Safer Better Care







Quality Dimensions

Health Information and Quality Authority
An t-Ardáil Lín Fhianaise agus Calaocht Sláinte

A quality service focuses on:

- Person-Centred Care and Support
- Effective Care and Support
- Safe Care and Support
- Better Health and Wellbeing

Safer Better Care

Delivering the Quality Dimensions

Health Information and Quality Authority
An t-Ardáil Lín Fhianaise agus Calaocht Sláinte

Delivering improvements within the quality dimensions depends on **capability and capacity** in four key areas:

- Leadership, Governance and Management
- Workforce
- Use of Resources
- Use of Information

Safer Better Care

Theme 1 - Person-centred care and support


Health Information and Quality Authority
An t-Ardáil Lín Fhianaise agus Calaocht Sláinte

Service User


Importance of communication and shared decision making

Safer Better Care

Theme 2- Effective care and support



Health Information and Quality Authority
An t-Autoritas Linn Pháraithe agus Calaithe Síolta




Service User

- Effective Care and Support
- Safe Care and Support
- Use of Resources
- Use of Information
- Use of Research
- Use of Innovation
- Use of Technology
- Use of Knowledge


Structures and systems to support infection prevention and control efforts

Safer Better Care

Theme 3- Safe care and support



Health Information and Quality Authority
An t-Autoritas Linn Pháraithe agus Calaithe Síolta



Service User

- Effective Care and Support
- Safe Care and Support
- Use of Resources
- Use of Information
- Use of Research
- Use of Innovation
- Use of Technology
- Use of Knowledge

Infection prevention and control best practices

Safer Better Care

Theme 4- Better health and wellbeing



Health Information and Quality Authority
An t-Autoritas Linn Pháraithe agus Calaithe Síolta



Service User

- Effective Care and Support
- Safe Care and Support
- Use of Resources
- Use of Information
- Use of Research
- Use of Innovation
- Use of Technology
- Use of Knowledge

Support learning and empowerment for the person using the service and the public

Safer Better Care

Theme 5- Leadership, governance and management




- Everyone's responsibility from management to the point of care

Safer Better Care



Theme 6- Workforce




- Training and educational needs

Safer Better Care

Theme 7- Use of Resources

- Staff/ IT/ equipment/ facilities/ infrastructure requirements

Safer Better Care

Theme 8- Use of Information

Health Information and Quality Authority
An t-Ardán Lín Fhianais agus Caliaidh Sláinte

- Data protection and management of healthcare records

Safer Better Care

Key message- integrated approach

Health Information and Quality Authority
An t-Ardán Lín Fhianais agus Caliaidh Sláinte

An entire healthcare system-wide integrated approach to infection prevention and control is essential to ensure patient safety. A coordinated effort between the acute, primary and community care services would support infection prevention and control best practice across the system.

Safer Better Care


Next Steps

Health Information and Quality Authority
An t-Ardán Lín Fhianais agus Caliaidh Sláinte

- First meeting of Advisory Group on October 6th
- Focus Groups
 - Gather further information from service users, frontline staff and management to obtain their opinion on what they believe are the key issues that the standards should address.

Safer Better Care

Focus Groups with staff



Galway 16th October

Cork 23rd October

Dublin 7th November

Health Information and Quality Authority
An tAidise Lim Teoranta
an tAidise Lim Teoranta

Safer Better Care

Thank You

fmckenna@higa.ie

ckeane@higa.ie

Health Information and Quality Authority
An tAidise Lim Teoranta
an tAidise Lim Teoranta

Safer Better Care
